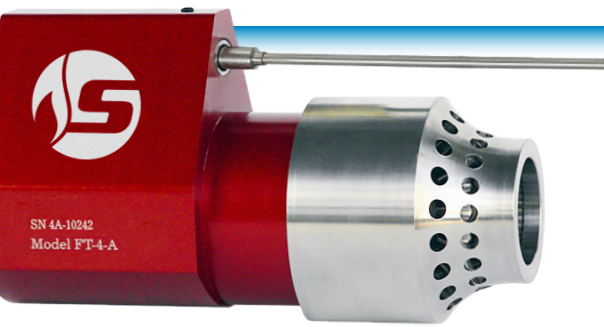


# FT Ignition Units

PATENTED SPARKLESS TECHNOLOGY



## NO ADJUSTMENT, NO CLEANING

- True plug and play
- Time-saving simple installation
- No gaps to set
- Armored, flame resistant, conduit-ready wiring
- Coil not required
- Compliant to API RP 12N flame arrester testing

## FEATURES

- SureFire Sparkless Ignition Technology included on all FT units
- 6061 grade aluminum body, anodized red
- 304 grade stainless steel nozzle
- Date coded, individually serialized
- Extreme cold weather service with proper fuel train
- Low power, 12 volt DC service
- High temperature ignition wiring to 1000°F
- Flame sensing with flame rod or thermocouple

## INTEGRATED FLAME SENSOR AVAILABLE IN TWO CONFIGURATIONS

### Integrated Flame Sensor "F"

- Kanthal flame rod rated 2600°F
- Armored wiring harness to 500°F duty / 800°F flash
- Enclosed fire tube service

### Integrated Flame Sensor "T"

- Type K thermocouple flame-sensing rated 2200°F
- Armored wiring harness to 1000°F duty / 1500°F flash
- Exposed combustor or incinerator service

## PILOTLESS IGNITERS



**FT-2-AF** FLAME ROD  
**FT-2-AT** THERMOCOUPLE

- Inlet: 1 inch NPT
- Duty: Pilotless, direct ignition of burner
- For use with Eclipse 1 inch mixer @ 125,000 Btu/h
- Use with non-piloted fuel train



**FT-4-AF** FLAME ROD  
**FT-4-AT** THERMOCOUPLE

- Inlet: 2 inch NPT
- Duty: Pilotless, direct ignition of main burner
- For use with Eclipse 2 inch mixer @ 500,000 Btu/h
- Use with non-piloted fuel train



**FT-4-AF VT\*** FLAME ROD  
**FT-4-AT VT\*** THERMOCOUPLE

- SureFire's custom design for vertical treaters, Patent Pending
- Inlet: 2 inch NPT
- Duty: Pilotless, direct ignition of main burner
- For use with Eclipse 2 inch mixer @ 500,000 Btu/h
- Use with non-piloted fuel train
- \*For vertical treaters



**FT-6-AF** FLAME ROD  
**FT-6-AT** THERMOCOUPLE

- Inlet: 3 inch NPT
- Duty: Pilotless, direct ignition of main burner
- For use with Eclipse 3 inch mixer @ 1,000,000 Btu/h
- Use with non-piloted fuel train



**FT-6-AF VT\*** FLAME ROD  
**FT-6-AT VT\*** THERMOCOUPLE

- SureFire's custom design for vertical treaters, Patent Pending
- Inlet: 3 inch NPT
- Duty: Pilotless, direct ignition of main burner
- For use with Eclipse 3 inch mixer @ 1,000,000 Btu/h
- Use with non-piloted fuel train
- \*For Vertical Treaters



[surefire-controls.com](http://surefire-controls.com)  
Designed and manufactured in the U.S.A.

over **350**  
**MILLION HOURS**  
of safe burner control

## PILOTED IGNITERS



FT-1-SF\*\* FLAME ROD  
FT-1-ST\*\* THERMOCOUPLE  
FT-1-S\*\* IGNITER

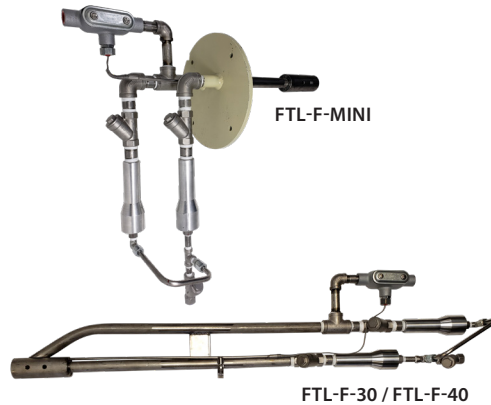
- Inlet: ½ inch NPT
- Duty: Piloted
- Use with pilot venturi, #72 orifice
- Patent Pending
- \*\*Over 1 million Btu/hr rating requires a pilot

### FTL-F-MINI / FTL-F-30 / FTL-F-40

#### COMBUSTOR PILOT

##### Piloted Ignition

- Compatible with the BMS-100 and BMS-350
- Flame sensing with thermocouple
- Services combustors and enclosed flares
- Gas Inlet: ¼ inch NPT



### FTL-F-72

#### LARGER FLARE PILOT FOR HARSH CONDITIONS

##### Piloted Ignition

- Compatible with the BMS-100 and BMS-350
- Flame sensing with thermocouple
- Services piloted flares
- Gas Inlet: ¼ inch NPT
- Patent Pending



| Igniter     | Type      | Btu/hr (net)* | Inlet Size | BMS-100 | BMS-300 | BMS-350 |
|-------------|-----------|---------------|------------|---------|---------|---------|
| FT-1-S**    | Piloted   | N/A           | ½" NPT     | ✓       | ✓       |         |
| FT-1-SF**   | Piloted   | N/A           | ½" NPT     |         | ✓       | ✓       |
| FT-1-ST**   | Piloted   | N/A           | ½" NPT     | ✓       |         | ✓       |
| FT-2-AF     | Pilotless | 125,000       | 1" NPT     |         | ✓       | ✓       |
| FT-2-AT     | Pilotless | 125,000       | 1" NPT     | ✓       |         | ✓       |
| FT-4-AF     | Pilotless | 500,000       | 2" NPT     |         | ✓       | ✓       |
| FT-4-AT     | Pilotless | 500,000       | 2" NPT     | ✓       |         | ✓       |
| FT-4-AF VT* | Pilotless | 500,000       | 2" NPT     |         | ✓       | ✓       |
| FT-4-AT VT* | Pilotless | 500,000       | 2" NPT     | ✓       |         | ✓       |
| FT-6-AF     | Pilotless | 1,000,000     | 3" NPT     |         | ✓       | ✓       |
| FT-6-AT     | Pilotless | 1,000,000     | 3" NPT     | ✓       |         | ✓       |
| FT-6-AF VT* | Pilotless | 1,000,000     | 3" NPT     |         | ✓       | ✓       |
| FT-6-AT VT* | Pilotless | 1,000,000     | 3" NPT     | ✓       |         | ✓       |
| FTL-F-MINI  | Piloted   | N/A           | ¼" NPT     | ✓       |         | ✓       |
| FTL-F-30    | Piloted   | N/A           | ¼" NPT     | ✓       |         | ✓       |
| FTL-F-40    | Piloted   | N/A           | ¼" NPT     | ✓       |         | ✓       |
| FTL-F-72    | Piloted   | N/A           | ¼" NPT     | ✓       |         | ✓       |

\*For vertical treater applications

\*\*Over 1 million Btu/hr rating requires a pilot

Revised 3/3/2020



**Surefire Burner Management Systems**  
1910 Rustic Place  
Farmington, New Mexico 87401  
505-333-2878  
[surefire-controls.com](http://surefire-controls.com)

Designed and manufactured in the U.S.A.